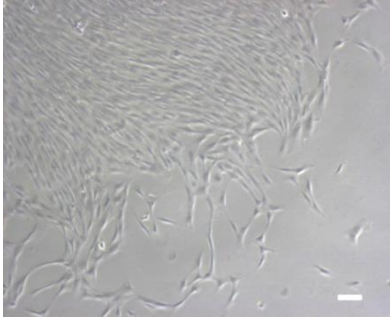
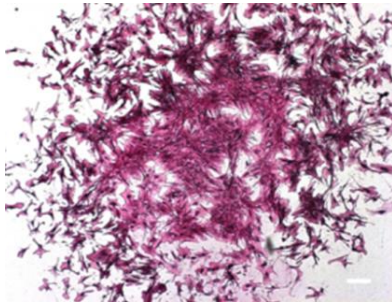

CLINICALLY RELEVANT MESENCHYMAL STEM CELL POPULATIONS FOR RESEARCH



“We offer unique stem cell populations within a clinically relevant age range and with clinical presentations”



Mesenchymal stem cells, MSCs, or skeletal stem cells, of bone marrow origin, have been used as research tools for decades and within the past 10 years progressed to hundreds of clinical trials for various regenerative and immunomodulatory approaches. The MSC research field is expanding rapidly, however the outcomes of various *in vitro* and *in vivo* studies are not directly comparable due to variability in the stem cell source used, purity, or even irrelevant donor selection.

We offer heterogeneous populations of MSCs, from osteoarthritic donor cohorts (with other orthopaedic cohorts in the pipeline), for biologics and biomaterial testing.

Our stem cells offer the following key advantages:

- **Clinically relevant age range** for testing therapeutics/biomaterials designed for the elderly, adults or adolescents
- **Donors with clinical presentations** – osteoarthritis (with other orthopaedic cohorts in the pipeline), as a suitable model for relevant drug/biomaterial testing
- **Early passages and guaranteed cell expansion** – P2 stocks, >10 population doublings under optimal conditions
- **Detailed flow cytometric analysis** – for expression of common mesenchymal stem/progenitor cell markers, including for STRO-1, CD73, CD90, CD105 and lack of CD45
- **Multipotency** – tested for osteo-, chondro- and adipogenic differentiation *in vitro*
- **Pathogen free** – HBV/HCV/HIV, bacteria, mycoplasma and fungi free